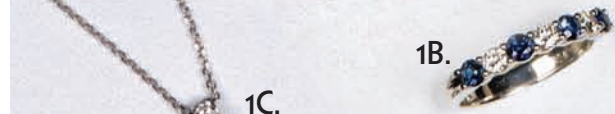


**DENNIS J. DALTON**  
**FINE JEWELRY**  
 74 Bowery, New York, NY 10013  
 212-219-2331/32  
 1-800-824-1711  
 Fax 212-274-1680

PRSR STD  
 US POSTAGE  
 PAID  
 BROOKLYN, NY  
 PERMIT 667



1A.



1B.



1C.



1D. B1929  
 Diamond and sapphire tennis style bracelet twt.- 4.90ct  
 Ret. \$5,000 Our Price \$2,500



1E.



1F.

[www.dennisjdaltonltd.com](http://www.dennisjdaltonltd.com)  
 email: [dj.dalton@verizon.net](mailto:dj.dalton@verizon.net)

1G. P5895  
 Emerald and diamond pendant twt.  
 90/100ct.  
 Ret. \$1,990 Our Price \$995



1H.



1I.



1J.



1K.

**800-824-1711**



1O.



1P. P6139  
 Tricolor trinity style pendant.  
 Ret. \$1,150 Our Price \$575



1L.



1M.



1N.

Call in your order, we like talking to our customers.  
 It gives us a chance to be helpful, unlike a blinking,  
 click on, shopping cart.



1Q.

1A. E4913  
 14k antique look sapphire and diamond hanging earrings twt. 1.75ct.  
 Ret. \$1,750 Our Price \$875

1B. WB1774  
 Classic sapphire and diamond band twt.90/100ct.  
 Ret. \$1,900 Our Price \$950

1C. P6100  
 18k white gold oval tanzanite pendant with diamonds and genuine emeralds twt. 2.45ct.  
 Ret. \$3,250 Our Price \$1,625

1E. ER2003  
 18k white gold ring with baguette and full cut round diamonds twt.3/4ct.  
 Ret. \$2,350 Our Price \$1,175

1F. E5145  
 Very lively genuine emerald & diamond earring twt. .65/100 ct.  
 Ret. \$1,300 Our Price \$650

1R.

1H. L4431  
 18k Couture style ruby and diamond ring twt 3.90ct.  
 Ret. \$5,100 Our Price \$2,580

1I. ER2001  
 18k white gold mounting surrounded with fine full cut round diamonds in a marquise shaped halo and a split shank band. It will accept most size diamonds or colored stones in center mounting wt. 1.30ct.  
 Ret. \$5,100 Our Price \$2,550

1J. ER1658  
 14k white gold mounting surrounded with fine full cut round diamonds in a pear shaped halo with a single row of diamond band. it will accept most size diamonds or colored stones in center mounting wt. 3/4ct.  
 Ret. \$3,400 Our Price \$1,700

1K. L4411  
 Yellow gold diamond and emerald band twt.80/100ct.  
 Ret. \$2,300 Our Price \$1,150

1L. L4419  
 Diamond antique ring wt. 3/4ct.  
 Ret. \$1,900 Our Price \$950

1M. ER1989  
 18k white gold cushion shaped halo mounting surrounded with fine full cut round diamonds and 3 row split shank band. it will accept most size diamonds or colored stones in center mounting wt. 1.05ct  
 Ret. \$5,000 Our Price \$2,500

1N. ER1938  
 14k yellow gold antique look mounting surrounded with fine full cut round diamonds in a single row of diamond band. it will accept most size diamonds or colored stones in center mounting wt. 80/100ct.  
 Ret. \$3,450 Our Price \$1,725

1O. ER1983  
 18k white gold halo style mounting surrounded with larger size diamonds and a single row of diamond band. It will accept most size diamonds or colored stones in center mounting wt. 1.40ct  
 Ret. \$4,800 Our Price \$2,400

1Q. P6107  
 Clear fine baguette diamonds contrasted by very brilliant round diamond pendant twt. 75/100ct  
 Ret. \$2,400 Our Price \$1,200

1R. B1945  
 14k diamond antique look bracelet twt.- 2.00ct.  
 Ret. \$3,990 Our Price \$1,995



# All Diamonds Are Fine Full Cuts.

Prices subject to change.

**2E. E5131**  
14k white gold pave hanging earrings wt. 40/100ct  
Ret. \$7,500 **Our Price \$750**

**2D. L4398**  
White gold diamond infinity ring  
wt. 1/3ct  
Ret. \$1,190 **Our Price \$595**

**2C. P6059**  
Diamond detailed scrollwork pendant 85/100ct.  
Ret. \$1,950 **Our Price \$975**

**2A. E5141**  
Diamond cluster earrings wt. 60/100ct  
Ret. \$1,700 **Our Price \$850**

**2B. P6049**  
White gold circle of life pendant wt. 40/100ct  
Ret. \$1,300 **Our Price \$650**

**2F. E5150**  
Diamond hoop earrings 1.60ct.  
Ret. \$3,790 **Our Price \$1,895**

**2G. P5942**  
Classic diamond heart shaped pendant wt. 60/100ct.  
Ret. \$1,760 **Our Price \$880**

**2H. L4429**  
18k diamond and amethyst designer style ring wt. 4.60ct.  
Ret. \$1,790 **Our Price \$895**

**2I. E5132**  
Diamond and amethyst cushion shaped earrings.  
Ret. \$700 **Our Price \$350**

**2J. L4397**  
14k diamond bow ring wt. 1/3ct.  
Ret. \$1,350 **Our Price \$675**

**2K. E4983**  
Diamond hoop earrings wt. 80/100ct.  
Ret. \$1,900 **Our Price \$950**

**2L. L4415**  
Braided pave ring wt. 1/2ct.  
Ret. \$1,500 **Our Price \$750**

**2U. L4394**  
White gold diamond cross ring.  
Ret. \$790 **Our Price \$395**

**2V. B1957**  
Classic diamond tennis style bracelet weighing 3.00ct.  
Ret. \$7,000 **Our Price \$3,500**

**2W. P6122**  
18k freeform pave necklace wt. 40/100ct.  
Ret. \$1,300 **Our Price \$650**

**2X. E5022**  
Diamond pave huggies wt. 1/2ct.  
Ret. \$1,500 **Our Price \$750**

**2Y. E4932**  
Diamond butterfly earrings.  
Ret. \$700 **Our Price \$350**

**2Z. E5130**  
Diamond pave heart shaped earrings.  
Ret. \$900 **Our Price \$450**

**2M. E4494**  
Diamond stud earrings wt. 53/100ct.  
Ret. \$1,300 **Our Price \$665**

**2N. E5160**  
Diamond star earrings.  
Ret. \$700 **Our Price \$350**

**2O. P6091**  
14k yellow gold diamond and citrine pendant wt. 2.95ct.  
Ret. \$1,190 **Our Price \$595**

**2P. L4058**  
White & champagne color diamonds set in white & rose gold ring wt. 1.00ct.  
Ret. \$1,750 **Our Price \$875**

**2Q. P6137**  
Two tone diamond pave pendant.  
Ret. \$900 **Our Price \$450**

**2R. E5136**  
Yellow gold diamond pave earrings wt. 65/100ct.  
Ret. \$1,700 **Our Price \$850**

**2S. P6080**  
18k diamonds set in center to create one dazzling pendant wt. 70/100ct.  
Ret. \$2,950 **Our Price \$1,475**

**2T. E5162**  
Hanging earring with multiple white and yellow diamonds set in center wt. 90/100ct.  
Ret. \$2,200 **Our Price \$1,100**

**2AA. L4434**  
14k white gold pave ring 3/4ct.  
Ret. \$1,950 **Our Price \$975**

**2BB. P6110**  
Very brilliant solitaire cluster diamond drop pendant 1/3ct.  
Ret. \$1,350 **Our Price \$675**

**2CC. E5179**  
Diamond square shaped cluster stud earrings.  
Ret. \$2,350 **Our Price \$1175**

**2DD. E4920**  
Diamond and blue topaz earrings.  
Ret. \$700 **Our Price \$350**

**2EE. P5976**  
Diamond and blue topaz pendant.  
Ret. \$640 **Our Price \$320**

**2FF. L4428**  
Incredible blue topaz blue sapphire and diamond ring wt. 2.00ct.  
Ret. \$2,570 **Our Price \$1,285**

**Amex, Visa, MC, Discover.**

**Free Ground Shipping.**

Not Responsible for Typographical Errors